

KIT SMALL 105 BLACK	KIT SMALL PLUS 105 BLACK	KIT MEDIUM 140 BLACK	KIT MEDIUM PLUS 140 BLACK	KIT LARGE 170 BLACK
------------------------	-----------------------------	-------------------------	------------------------------	------------------------

- | | | | | |
|-------------------------------------|--|-------------------------------------|--|--|
| ◆ Code 215685 | ◆ Code 215686 | ◆ Code 215687 | ◆ Code 215688 | ◆ Code 215689 |
| ◆ Photovoltaic Module MFB105 (105W) | ◆ Photovoltaic Module MFB105 (105W) | ◆ Photovoltaic Module MFB140 (140W) | ◆ Photovoltaic Module MFB140 (140W) | ◆ Photovoltaic Module MFB170 (170W) |
| ◆ Solar charge regulator PRS300 | ◆ Solar charge regulator PRM350 (MPPT) | ◆ Solar charge regulator PRS300 | ◆ Solar charge regulator PRM350 (MPPT) | ◆ Solar charge regulator PRM350 (MPPT) |
| ◆ Fixing kits KFPB530 | ◆ Fixing kits KFPB530 | ◆ Fixing kits KFPB670 | ◆ Fixing kits KFPB670 | ◆ Fixing kits KFPB670 |
| ◆ KIT Complete KT6K-C50 | ◆ KIT Complete KT6K-C50 | ◆ KIT Complete KT6K-C50 | ◆ KIT Complete KT6K-C50 | ◆ KIT Complete KT6K-C50 |

MODEL	MFB105	MFB140	MFB170
TYPE	PERC (Passivated Emitter and Rear Cell)	PERC (Passivated Emitter and Rear Cell)	PERC (Passivated Emitter and Rear Cell)
CELLS NUMBER	36	36	36
RATED VOLTAGE	12 V	12 V	12 V
MAX POWER	105 W	140 W	170 W
TOLERANCE	+3 %	+3 %	+3 %
OPEN CIRCUIT VOLTAGE	23,76 V	21,78V	23,76 V
SHORT CIRCUIT VOLTAGE	5,33 A	7,75 A	8,63 A
VOLTAGE AT MAX POWER	20,88 V	19,14 V	20,88 V
CURRENT AT MAX POWER	5,03 A	7,31 A	8,14 A
DIMENSIONS (mm)	1062 x 530 x 30	1116 x 670 x 30	1320 x 670 x 30
WEIGHT (Kg)	6,2	8	9,5

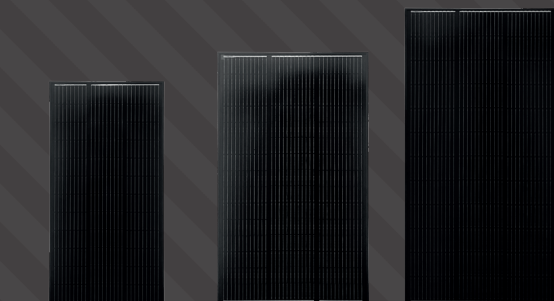
KIT SMALL 110 STANDARD	KIT SMALL PLUS 110 STANDARD	KIT MEDIUM 145 STANDARD	KIT MEDIUM PLUS 145 STANDARD	KIT LARGE 175 STANDARD
---------------------------	--------------------------------	----------------------------	---------------------------------	---------------------------

- | | | | | |
|------------------------------------|--|------------------------------------|--|--|
| ◆ Code 215680 | ◆ Code 215681 | ◆ Code 215682 | ◆ Code 215683 | ◆ Code 215684 |
| ◆ Photovoltaic Module MF110 (110W) | ◆ Photovoltaic Module MF110 (110W) | ◆ Photovoltaic Module MF145 (145W) | ◆ Photovoltaic Module MF145 (145W) | ◆ Photovoltaic Module MF175 (175W) |
| ◆ Solar charge regulator PRS300 | ◆ Solar charge regulator PRM350 (MPPT) | ◆ Solar charge regulator PRS300 | ◆ Solar charge regulator PRM350 (MPPT) | ◆ Solar charge regulator PRM350 (MPPT) |
| ◆ Fixing kits KFPN530 | ◆ Fixing kits KFPN530 | ◆ Fixing kits KFPN670 | ◆ Fixing kits KFPN670 | ◆ Fixing kits KFPN670 |
| ◆ KIT Complete KT6K-C50 | ◆ KIT Complete KT6K-C50 | ◆ KIT Complete KT6K-C50 | ◆ KIT Complete KT6K-C50 | ◆ KIT Complete KT6K-C50 |

MODEL	MF110	MF145	MF175
TYPE	PERC (Passivated Emitter and Rear Cell)	PERC (Passivated Emitter and Rear Cell)	PERC (Passivated Emitter and Rear Cell)
CELLS NUMBER	36	36	36
RATED VOLTAGE	12 V	12 V	12 V
MAX POWER	110 W	145 W	175 W
TOLERANCE	+3 %	+3 %	+3 %
OPEN CIRCUIT VOLTAGE	23,76 V	21,78V	23,76 V
SHORT CIRCUIT VOLTAGE	5,58 A	8,03A	8,88 A
TENSIONE ALLA MAX POTENZA	20,88 V	19,14 V	20,88 V
CURRENT AT MAX POWER	5,27 A	7,58 A	8,38 A
DIMENSIONS (mm)	1062 x 530 x 30	1116 x 670 x 30	1320 x 670 x 30
WEIGHT (Kg)	6,2	8	9,5

PHOTOVOLTAIC KIT

◆ BLACK SERIES

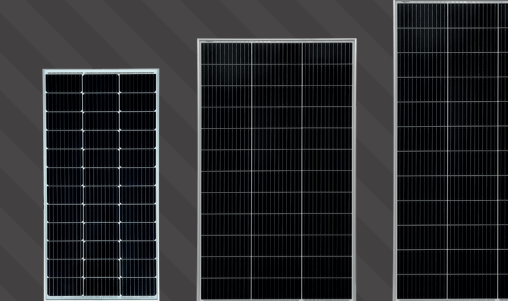


MFB105

MFB140

MFB170

◆ STANDARD SERIES



MF110

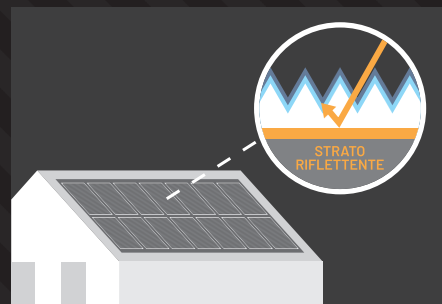
MF145

MF175

PERC CELLS

PHOTOVOLTAIC MODULES CBE

Made with PERC (Passivated Emitter and Rear Cell) solar cells guarantee a higher level of conversion efficiency and, at the same time, additional technical advantages such as a lower temperature coefficient and, therefore, better performance.

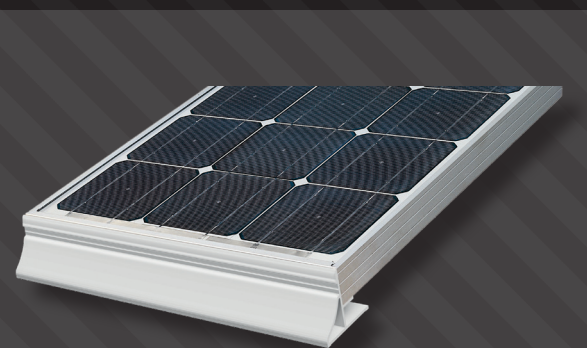


QUICK CONNECTORS

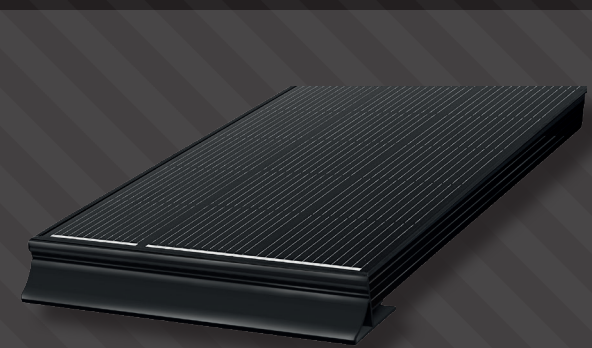
2 QUICK CONNECTORS to connect the latest series of CBE photovoltaic modules.



ANODIZED ALUMINUM KIT



KFPN



KFPB

PRS300



PRM350



MODEL	PRS300	PRM350
RATED VOLTAGE	12V	12V
MAXIMUM POWER	300W	300W (32÷40 cells) – 350W (41÷72 cells)
MAX POWER PHOTOVOLTAIC MODULES	2	2
PERFORMANCE		>95%
AUTOMATIC SHUTDOWN	In the absence of sunlight	In the absence of sunlight
END-OF-CHARGE VOLTAGE	14,1V (A) - 14,3V (B) - 14,7V (C)	14,1V (A) - 14,4V (B) - 14,7V (C) - 14,6V (Li)
FLOAT VOLTAGE	13,5V(A) – 13,8V(B) – 13,8V(C)	13,5V (A) - 13,8V (B) - 13,8V (C) - 13,8V (Li)
BATTERY TYPE SELECTOR	3 position dip-switch	3 position dip-switch
NUMBER OF CHARGE LINES	3	4
BATTERY DESULPHATION	YES	YES
REVERSE CURRENT BLOCKING PROTECTION	Electronic	Electronic
REVERSE POLARITY PROTECTION	YES	YES
TEST PANEL CONNECTION	PT 742	PT 742
DIMENSIONS (mm)	115 x 90 H37	150 x 110 H48

KT6K-C50

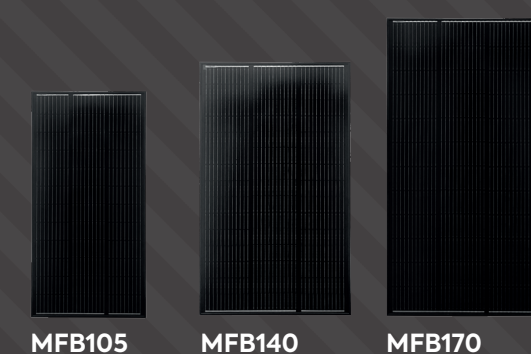
Cable with a cross-section of 4 mm allows very low losses due to voltage drop; specific cable resistant to UV radiation and for outdoor conditions

- ◆ Cable length 5 m
- ◆ Presence of two quick-connectors
- ◆ KT6 series exits roof ducts complete with a PG16 cable entry with internal gasket set up for the passage of two cables
- ◆ Possibility to purchase separately the KTR2-G and KTR2-F sheath fixing kit for anchoring the cables on the roof



PHOTOVOLTAIC KIT

◆ **BLACK SERIES**

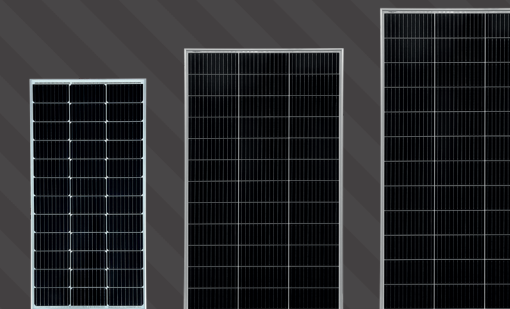


MFB105

MFB140

MFB170

◆ **STANDARD SERIES**



MF110

MF145

MF175

PERC CELLS